

Youth Exchange - Altamura (Italy) - 18-27 March 2024

# Erasmus+ Unexpected Literature

# CHAPTER 1

What is Cult?

# 1 INTRODUCTION

Everyone agrees that reading is important, but young people and new generations read less and less.

It's time to ask ourselves not only why this is happening, but also: how many ways are there to read? How many ways can a book be told?



# WHAT IS CULT?

Cult is a Youth Exchange project that aims to explore creative and innovative ways in which literature can be promoted among youth through gamification and non formal education.



# WHY CULT

Cult arises from a long chain of projects implemented by and with Associazione Link around the topic of reading and literature.

Moreover, Link manages a Community Library in the periphery of Altamura, which makes it eager to develop new ways of promoting reading together with the young participants with fewer opportunities



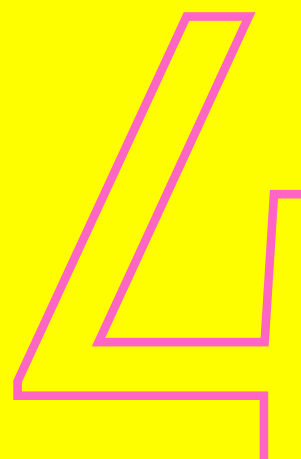
# CHAPTER 2

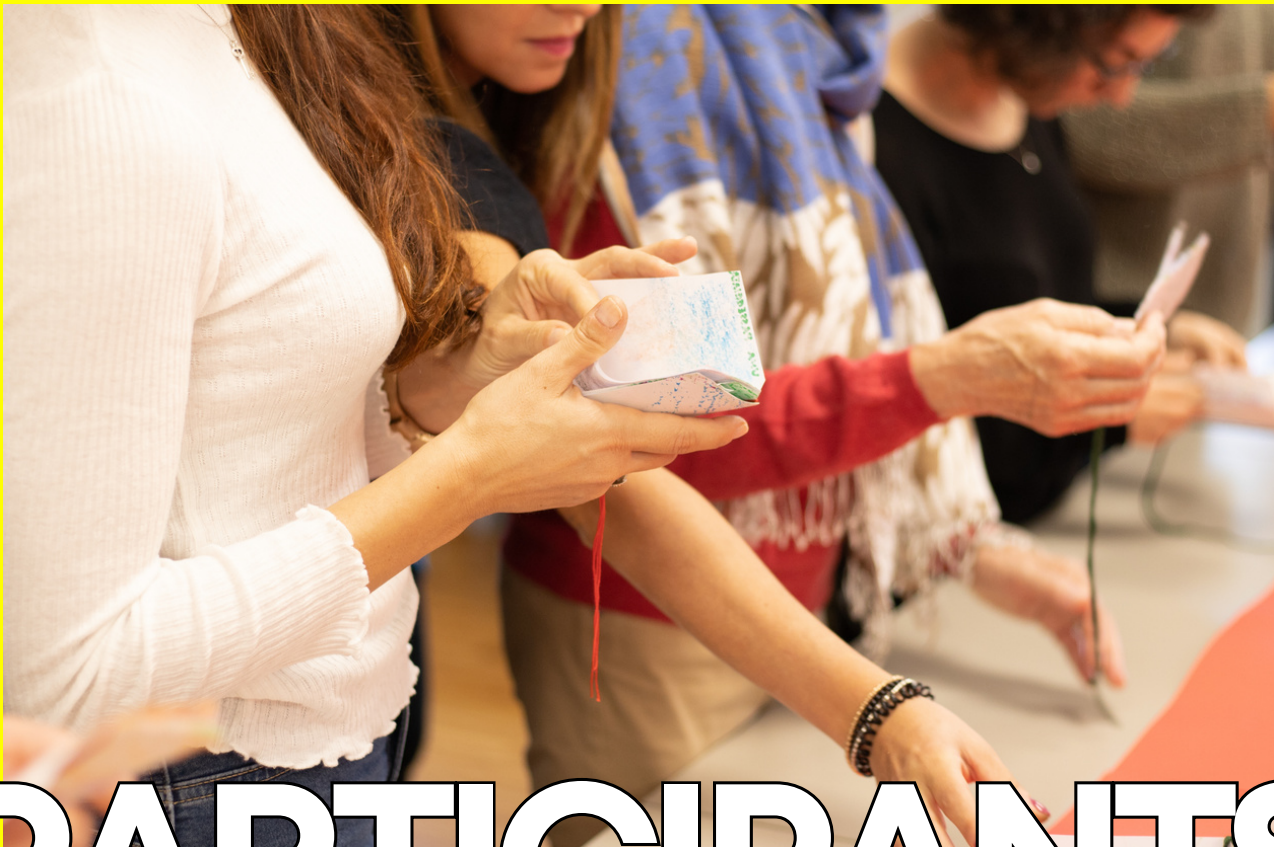
Activities &  
Participants



# ACTIVITIES

Participants will be involved in a series of **games and exercises** on the theme of reading, take part in practical workshops on **self-made books**, and organise a **final event** to disseminate the results and connect with the local community.





# PARTICIPANTS

You don't have to be an avid reader to participate. You only need to be a strongly **motivated** person **between 18 and 25 years old**.

Each national group will consist of five participants, including **one leader**. We invite organizations to compose gender balanced groups.





# CHAPTER

# 3

# PTER

Spaces



The participants will be hosted in **Oasi San Giovanni**, a place in the countryside, ten minutes by car outside of [Altamura](#). There is a kitchen, a large room for activities and eating together, a court for sports, and a garden where it is possible to do activities.

The participants will sleep in a **dormitory**, with six persons per room. There is also a separate room for the leaders of the project.



# ACCOMODATION

We will provide **transportation** between the accommodation and the activity space. The area, entirely surrounded by **nature**, allows participants to fully enjoy the experience, immersing themselves in inter-cultural interaction at 360°.

*"May the guests, during the days spent at the 'Oasi San Giovanni', be refreshed in **body and spirit**, in order to return with enthusiasm to their community"*

## GOOD TO KNOW

The place is spartan; bathrooms and dormitories are quite old-fashioned and there's no wi-fi. But with a little adaptability and flexibility, everything will be perfect!

# CHAPTER 4

Travel Info  
and APV



FROM  
BARI AIRPORT

There are two chances from **Bari Airport**: one is by shuttle bus from (timetables [here](#)) and another one is by train. In this second case, you need to take the train from the airport (Bari K.W.) to **Bari centrale** and then from Bari Centrale to **Altamura** (information on this [website](#)). To get the train to Altamura you need to change the station. They are close to each other, the company is [Ferrovie Appulo Lucane](#)).



FROM  
ANOTHER  
AIRPORT

From another airport, the connection will be discussed with the **organization**.

## IMPORTANT

Project dates are **18-27 March** (*travel days included*). You **must** arrive to **Altamura** by 8 p.m. on 18 March and leave in the morning on 27 March.

**Reimbursement** will be done under the conditions of *Erasmus Plus 2022 Guide*, and according to the partnership agreement that will be signed with the partners, following the standard travel table, if:

- all participants of the group **fully** attended the activities
- all the **documents** (invoices, tickets, boarding pass) have been produced and accompanied by the reimbursement sheet provided by Link;

Keep in mind, the reimbursement cannot exceed the maximum amount granted by the program according to the [Distance Calculator](#), which you can also consult if you do not know the distance between your country and the host one.



# TRAVEL BUDGET

Namely: if the main part of the travel, in terms of kilometers traveled, is done by bus, train or car-pooling

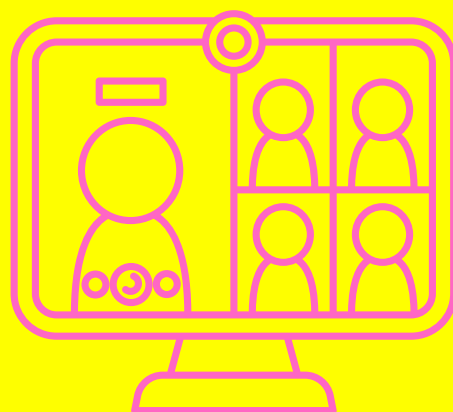
Travel distance	Normal travel	Green travel
10 – 99 km	23 euro	/
100 – 499 km	180 euro	210 euro
500 – 1 999 km	275 euro	320 euro
2 000 – 2 999 km	360 euro	410 euro
3 000 – 3 999 km	530 euro	610 euro
4 000 – 7 999 km	820 euro	/

## IMPORTANT

- Participants can arrive 1 day before and leaving 1 day after the project dates (18 - 27 March). The accommodation for the extra-days is not covered by the project budget;
- In case of **green travel**, participants have 2 travel days for the arrivals and other 2 travel days for the departure. We ask you to inform us in advance in case you want to use green travel.

# APV

Before the beginning of the project, leaders of the national groups and the hosting organization will meet in an APV to get to know each other, discuss the logistical and content details of the project, share questions and gather insights. The dates of the APV has yet to be defined, but it will definitely be held **around mid-February** in **Altamura**, Italy. It's necessary for every leader to participate in this meeting. Details on the accommodation and programme of the APV will be communicated immediately after the selection of partners.







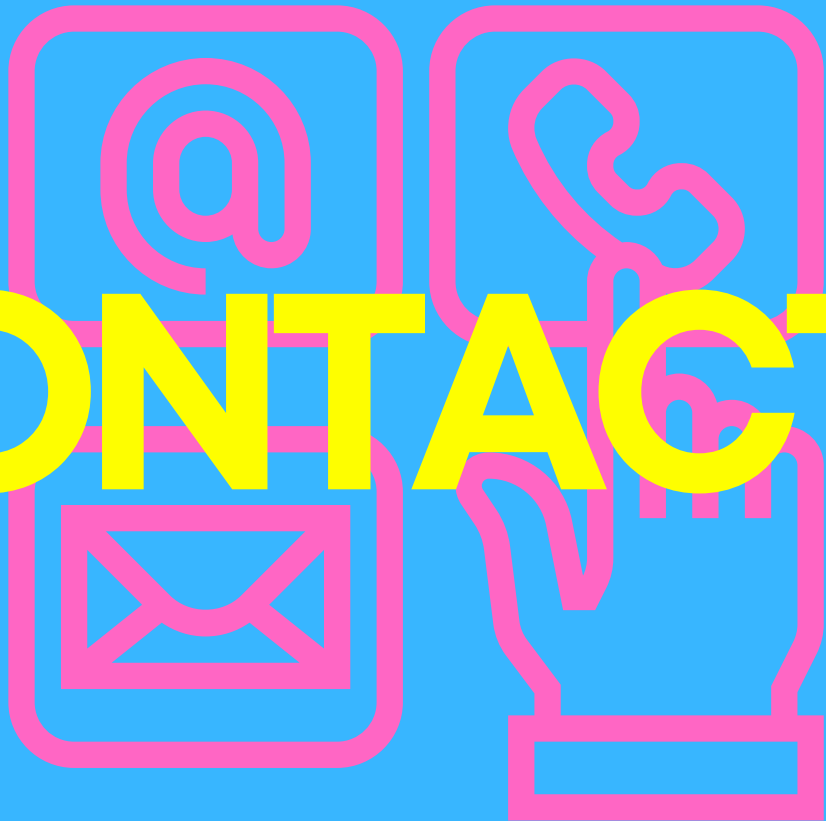
# HOW TO APPLY

Do you want to apply?

Please, fill out this form by **Friday,**  
**January 19**

<https://forms.gle/dSmESwYrBGPQQjKx7>

We'll let you know if you've been  
selected by the **23rd of January**



# CONTACTS

For any specific requests, please do not hesitate to contact us!

**Marco +39 3348138197**  
**Chiara +39 3200361507**  
**[link@linkyouth.org](mailto:link@linkyouth.org)**

Do you want to know more about our association?  
[linkyouth.org](http://linkyouth.org)